



*This product is sold
and supported
in the USA by*



LASER LAB SOURCE
marketplace for **Scientists & Engineers**

contact@LaserLabSource.com

800.887.5065

Diode driver (QCW / CW)



Information

- Designed to power the diode arrays used to pump high-power solid-state or fiber lasers.
- Optimized for use as part of laboratory, educational, experimental and industrial applications.
- In addition, it can be equipped with a controller of thermal stabilization of Peltier elements (TEC controller).
- It has current limit, duty cycle limit and safety interlocks.
- It is modified according to customer requirements for optimal selection of parameters for a specific load.

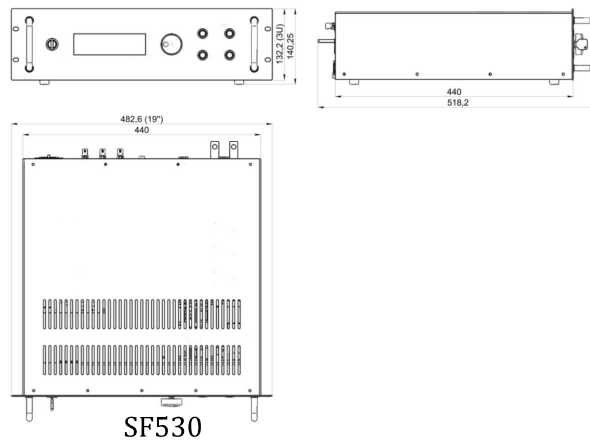
Specifications

	SF530-120/20	SF530-80/30	SF530-60/40	SF530-40/60	SF530-30/80	SF530-20/120
- Pulse (QCW) mode -						
Pulse rate* (F)	1-500 Hz, single mode					
Output voltage* (V)	0-20V	0-30V	0-40V	0-60V	0-80V	0-120V
Output current* (I)	1-240A	1-160A	1-120A	1-80A	1-60A	1-40A
Pulse duration* (τ)	50-1000 μ s					
Rise time**	<60 μ s					
Fall time**	<60 μ s					
- CW mode -						
Output voltage* (V)	0-20V	0-30V	0-40V	0-60V	0-80V	0-120V
Output current* (I)	1-120A	1-80A	1-60A	1-40A	1-30A	1-20A
- General characteristics -						
Output current tolerance	0.3 %					
Average output power* (P)	2.4 kW					
Data display	LCD					
Communication interface	RS232, RS485 (optional)					
Trigger in	5 V, 10 μ s					
Trigger out	5 V, 10 μ s					
Interlock	switch contact closure					
Cooling	air cooled					
Power Input	single phase 220 VAC, 50Hz					
Dimensions	440*132*440 mm; 3U					
Weight	20 kg					

* Values are limited by average power: $F \cdot V \cdot I \cdot \tau \leq P$ (pulse mode); $V \cdot I \leq P$ (CW mode)

**With a length of laser diode power wire is not more than 2m

Dimensions

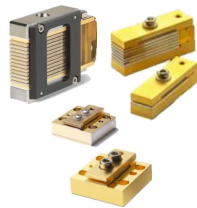


SF530

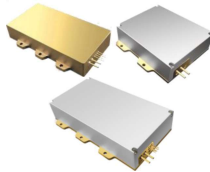
Examples of laser diode arrays



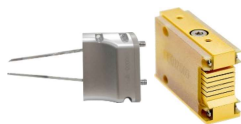
Laser II-VI



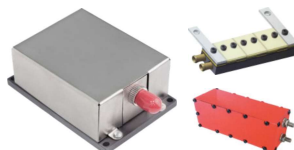
BPC/OPC40W,60W& 80W — 92A 1,8V
 BPC/OPC80W — 81A 1,65V
 HPC50W — 54A 1,65V
 Monsoon Compact framed vertical stack module
 Monsoon Frameless Vertical Stack Module
 Compact Bar on Microchannel cooler and etc.



808nm150W - 11A 40V / 915nm150W — 13,5A 24V
 915nm158W - 11A 36V / 915nm200W — 13,5A 35V
 940nm150W - 14A 24V / 940nm200W — 14A 35V
 976nm150W - 14A 23,8V / 976nm200W — 14A 35V
 976nm100W - 11,5A 24V / 976nm140W — 14A 23,8V
 976nm180W - 14A 35V
 915/940/976nm на 600W / 1000W / 2000W / 3000W and etc.



Vshiny FL-HVS61-6X1-360-760 — 80A 15V
 Vshiny FL-HVS61-6X1-600-1060 — 115A 2V
 Vsilk FL-1200-1000-808 — 110A 20V and etc.



Emitter of injection lasers IL-1M2
 KMLD-130 — 65A 6V
 32DL-504 / LLD-10
 SLM-7 / SLM-P-8N
 SLMP-6HII / LLD-500-1 and etc.