

MODULES

LDC/**E**-Mountx

High performance mount for butterfly laser diodes (7-pin and 14-pin)



_MAIN FEATURES

- Laser diode mount for 7-Pin or 14-Pin butterfly packages
- Zero insertion force (ZIF) replaceable mounting sockets
- Easy integration with most laser driver controllers
- Integrated modulation (<100 kHz BW) and connection to high speed 7-pin butterfly packages (18 GHz BW)
- Optimum heat dissipation (thick copper PCB acting as heatsink)
- Daughter boards for different pinouts and custom pinout are included
- Connection boards to LDC/E-Currentx00 and LDC/E-Temp3 are included

_PRODUCT SPECIFICATIONS

LDC/E-Mountx

Mount output

| | |
|---------------|------------|
| Current range | 2A per pin |
|---------------|------------|

General

| | |
|-----------|---|
| Connector | 2xD-SUB9 (male) (D-SUB9 and D-SUB15 adapter included) |
|-----------|---|

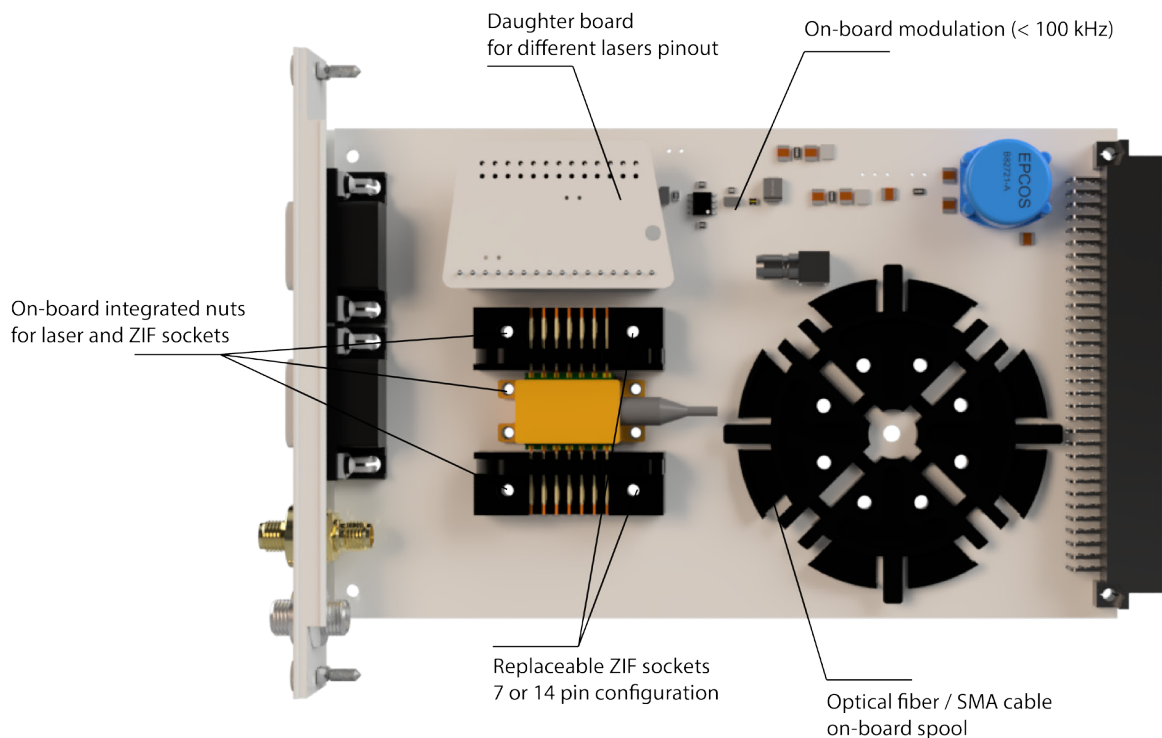
| | |
|--------------------|-----------------------------|
| Thermal resistance | 0.00011 m ² ·K/W |
|--------------------|-----------------------------|

| | |
|---------------------------|---------------|
| Thermal-conductive Factor | 2.0 W/(m · K) |
|---------------------------|---------------|

| | |
|--------|---|
| Format | VME 160mm (for use with chassis/xxHP series and SOM/E controller) |
|--------|---|

| | |
|-----------------------|-----------|
| Operating temperature | -40-85 °C |
|-----------------------|-----------|

| | |
|------|-------------------------------------|
| Size | 3U height, 4 HP width, 160 mm depth |
|------|-------------------------------------|



_DAUGHTER BOARDS: LASER PINOUTS

Daughter boards included with LDC/E-Mount:

- Pump laser:

| Pin | Name | Pin | Name |
|------------|--------------|------------|---------------|
| 1 | TEC Anode | 8 | PD Anode |
| 2 | Thermistor 1 | 9 | LD Cathode |
| 3 | PD Anode | 10 | LD Anode, GND |
| 4 | PD Cathode | 11 | LD Cathode |
| 5 | Thermistor 2 | 12 | NC |
| 6 | NC | 13 | LD Anode, GND |
| 7 | PD Cathode | 14 | TEC Cathode |

- Telecom laser:

| Pin | Name | Pin | Name |
|------------|--------------|------------|-------------|
| 1 | Thermistor 1 | 8 | Case |
| 2 | Thermistor 2 | 9 | Case |
| 3 | LD Cathode | 10 | NC |
| 4 | PD Anode | 11 | LD Anode |
| 5 | PD Cathode | 12 | NC |
| 6 | TEC Anode | 13 | LD Anode |
| 7 | TEC Cathode | 14 | NC |

- 7-pin butterfly laser:

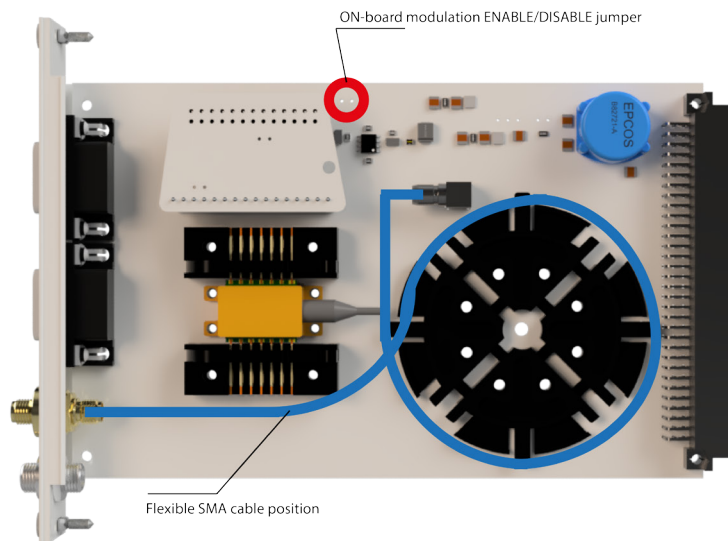
| Pin | Name | Pin | Name |
|------------|--------------|------------|-------------|
| 1 | Thermistor 1 | CASE | LD Anode |
| 2 | Thermistor 2 | | |
| 3 | LD Cathode | | |
| 4 | PD Anode | | |
| 5 | PD Cathode | | |
| 6 | TEC + | | |
| 7 | TEC - | | |

-You can either wire the connection with custom configuration or order a custom daughter board from us.

_MODULATION OPTIONS

- **On-board modulation (100 kHz).** Low noise modulation with a bandwidth of 100 kHz (different bandwidths available on request).

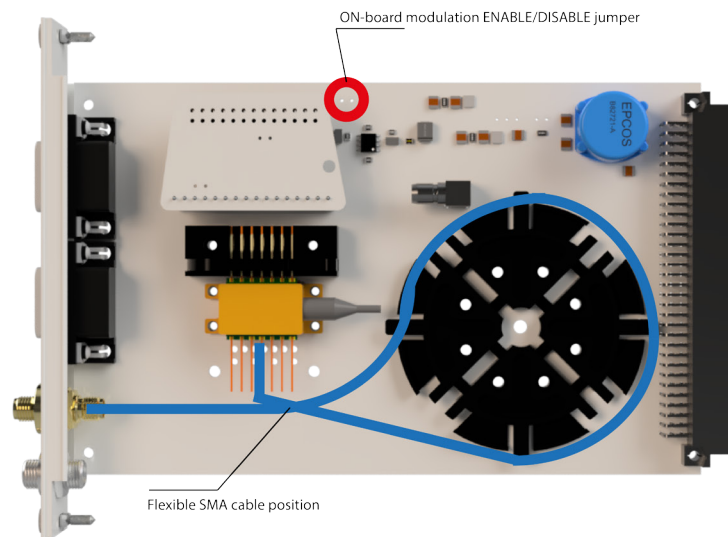
1. Place Flexible SMA cable in the position shown below.



2. Connect jumper to enable the on-board modulation.

- **External modulation (18 GHz).** This modulation can be used with 7-pin high speed butterfly packages with SMA/K connector. The modulation bandwidth of the connection is 18 GHz.

1. Place Flexible SMA cable in the position shown below.



2. Disconnect jumper to disable the on-board modulation.

_SHIELDED CONNECTION TO LDC/E-Current and LDC/E-Temp

Shielded connection boards are provided for direct connection without cables to LDC/E-Currentx00 and LDC/E-Temp3. These connections ensure low noise and avoid the use of long and bulky SUBD cables.



_ORDERING INFORMATION

This product is commercialized by Eblana Photonics:

sales@eblanaphotonics.com

+353 1 675 3220

Part number:

LDC/**E**-Mount

You can acquire this product as part of a MPPI system (see MPPI Brochure for further information and system configuration)

COMMERCIALIZED BY



eblanaphotonics

| **a** West Pier Business Campus, 3, Old Dunleary Rd, Dún Laoghaire, Co.
Dublin, A96 A621, Ireland
| **p** +353 1 675 3220
| **e** sales@eblanaphotonics.com
| **w** eblanaphotonics.com

_v2.0 datasheet LDC/E-Mount

All product specifications are subject to change without prior notice