



RLS/HS-008

Up to 150 Watts of Laser Waste Heat Removal Capacity

Three Heat Pipes Soldered into Nickel Plated Mounting Surface to Maximize Temperature Uniformity and Heat Flow

Two High-Volume Fans, Prewired to Terminal Block

Thermal Resistance from Mounting Plate to Ambient ~ 0.08°C/W

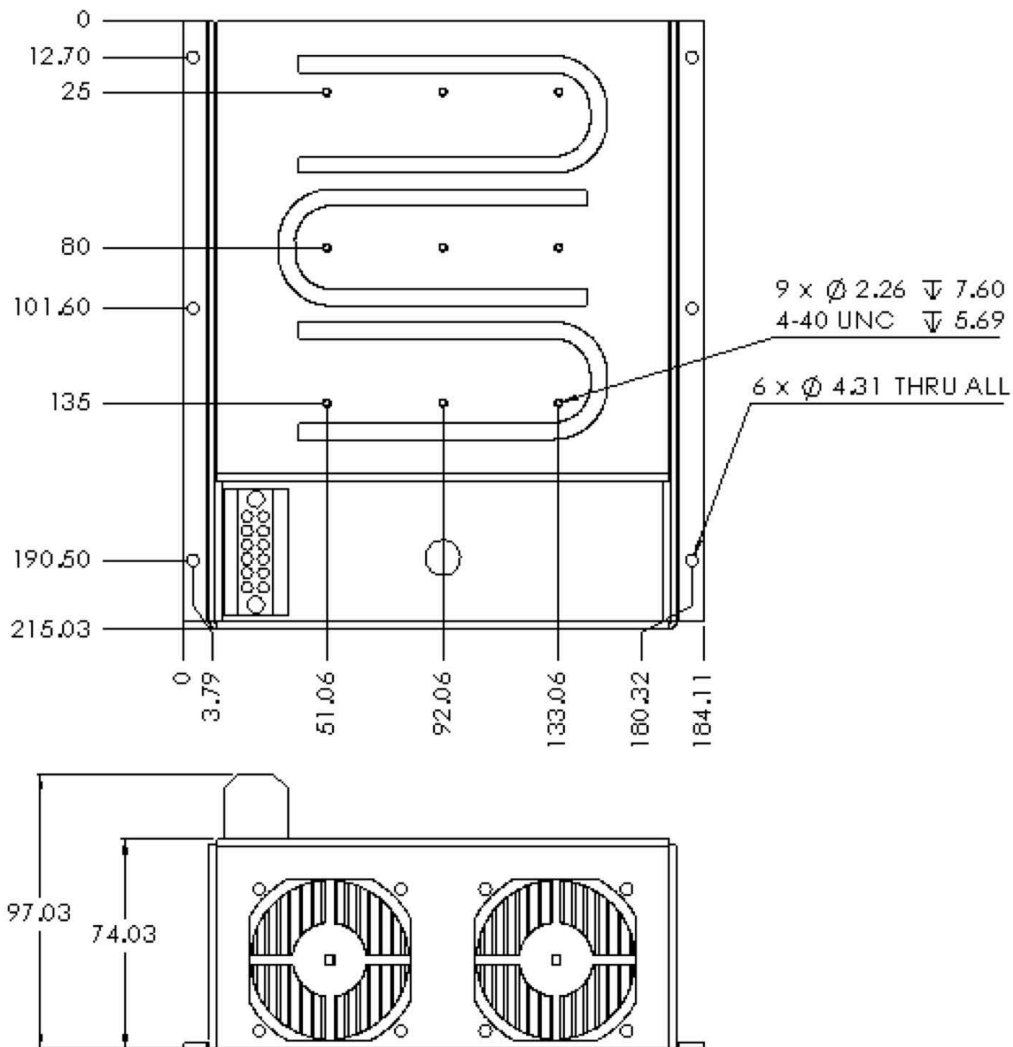
Custom Mounting Plates Available on Request

LASER LAB SOURCE

World Leading Products for
Laser Scientists and Engineers

1. Introduction

Model HS-008 is a compact high performance fan/heatsink combo designed for general cooling of high heat flux devices. The heatsinks are nickel plated with integrated heatpipes that are soldered in place to maximize heat transfer. Heatpipes are known to have extremely high thermal conductivity; three heatpipes make sure any concentrated heat source on any where of the heatsink base is spread over the entire base; this minimizes the spreading resistance and maximize the effectiveness of the heatsink fins.



The fins are also periodically segmented to break down the laminar layer of the airflow. Breaking down the laminar air flow increases turbulence and improve cooling effectiveness.

2. Performance

The thermal resistance of model HS-008 is 0.08 °C/W from heatsink to ambient.

3. Cooling Fan Specifications (2 Fans in Parallel)

Parameters	Specification Per Fan
Rated voltage	12 VDC
Operating voltage range	5.5 - 13.8 VDC
Input power	9.9 W
Rated current	0.83 A
Noise	47 dBA



LASER LAB SOURCE

world leading products for **Scientists & Engineers**

PRODUCT SALES AND SERVICE:

Orders for this product are fulfilled by LaserDiodeControl.com, part of the Laser Lab Source marketplace group. It is manufactured for sale on Laser Lab Source by elite thermal engineering.

PRODUCT WARRANTY:

This product is sold with a full one year warranty. It is warranted to be free from defects in material and/or workmanship for a period of one year from the date of shipment.



Laser Lab Source
670 S. Ferguson St., Suite 3
Bozeman, MT 59718 USA
800-887-5065
LaserLabSource.com

Elite Thermal Engineering
22914 11th Ave, W, Bothell, WA 98021
Phone: 425-770-8147
contact@elitethermalengineering.com